

A faint architectural floor plan is visible in the background of the green section, showing various rooms, corridors, and structural elements with dimensions and labels.

COMPANY PROFILE



We believe in Creating value

Jade Infra is a construction and service based company **estd. in 2007** with the mission to meet the infrastructural need across the Globe.

Since 2007, Jade Infra is a **company with expertise** in the field of erection and installation of Hydropower equipments, construction and development of Transmission and Distribution lines, Substation, Operation and Maintenance of Hydropower, Tools and Machinery supply and other infrastructural development projects.

Our Services



Hydropower Projects

- EPC Contract
- Erection & Installation of Hydro mechanical & Electromechanical component.



Survey and Geotechnical Investigation

- Topographic Survey, Drilling, Draft Tunnel, ERT, SRT etc.



Transmission & Distribution line

- Transmission and Distribution Line Design Supply and Installation.



Operation and Maintenance

- Operation and Maintenance, Repair of Hydropower and Solar Projects.



Civil Construction

- Design, construction, construction supervision of all kind of civil structures like building, bridge, road etc.



Testing and Calibration Services

- Support for testing and Calibration of Electrical and Mechanical Tools.

A Spotlight on Our **Hydropower Projects**

Rasuwagadi Hydro Electric Project (111MW)

Client: Voith Hydro
Project type: Installation, Testing and Commissioning of Electromechanical Works

Solu Dudhkoshi HEP (86MW)

Client: Voith Hydro
Project type: Installation, Testing and Commissioning of Electromechanical Works

Middle Tamor Hydropower Project (73 MW)

Client: Chongqing Water Turbine Works Co.,Ltd
Project type: Erection & Installation – Electro Mechanical Works

Likhu IV Hydro Electric Project (52.4 MW)

Client: Voith Hydro
Project type: Installation, Testing and Commissioning of Electromechanical Works

Rahughat HEP (40MW)

Client: Bharat Heavy Electricals Ltd (BHEL)
Project type: Installation, Testing and Commissioning of Electromechanical Works including Intermediate Material Handling and Material Management

Arun-3 HEP

Client: Bharat Heavy Electrical Limited
Project type: First and Second Stage Embedment Works

Mid Solu (10 MW)

Client: Global Hydro
Project type: Installation, Testing and Commissioning of Electromechanical Works

Lower Likhu HEP (28.1 MW)

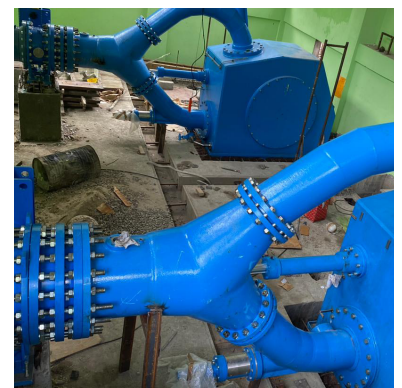
Client: Asia Pacific Power Company Ltd.
Project type: Supervision of Electromechanical works

Lower Solu HEP (82 MW)

Client: Essel Clean Solu Hydropower Private Limited
Project type: Design, Erection, Installation, Testing and Commissioning of PPV

Super Madi HEP (44MW)

Client: Asia Pacific Power Company Ltd.
Project type: Supervision of Electromechanical works



A Spotlight on Our **EPC Contract**



Mewa Khola HEP (23 MW)

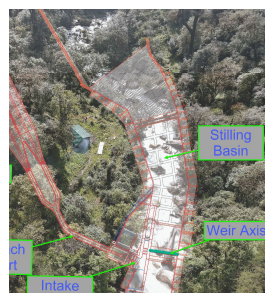
Mewa Khola Hydropower Project with Installed Capacity 23MW is located in Taplejung District. Powerhouse location is proposed at the left bank of Mewa khola 1500 m. u/s of Mewa Khola & Palung Khola confluence. The Tributaries of Mewa Khola at Intake is Mewa Khola and Phedi Khola. The design discharge is 3.16 m³/s and Gross Head is 893m. The power is evacuated through 132kv Transmission Line to Paplung Substation 4 km from Powerhouse. The Project will generate 137.797 GWh energy Annually.

A Spotlight on Our **Operation & Maintenance**

| Upper Balephi Hydropower Project (32MW)
in JV with TPSC

| Upper Lohore Hydropower Project (4MW)

| Monitoring & Preservation of EM
Equipment of Lower Solu (82MW)



A Spotlight on Our **Transmission and Distribution Projects**

Karuwa Seti (32 MW) 132kV Transmission Line

Client: Jhayamalongma Hydro Power Development Pvt. Ltd
Project type: Design, Supply, Construction, Installation, Testing and Commissioning of 132 kV Double Circuit Transmission Line

Midim-1 Transmission Line

Client: Mount Rasuwa Hydropower Pvt.LTD
Project type: 132KV Single Circuit TL 15KM

Construction of 11KV HT Line at Salyan Area

Client: Water Supply, Irrigation and Energy Development Office, Salyan
Project type: Distribution Line Construction of 11 KV HT Line total 33 km

Fast Tract 11kV Transmission Line

Client: Poly Chhangda Engineering Company Limited
Project type: Supply, Installation, Testing and Commissioning of double circuit 11kV Transmission Line of 3 km

11kV Distribution Network at Karnali Province (Package 01 and Package 03)

Client: NEA, Distribution and Consumer Service Directorate
Project type: Design, Installation/Erection, Testing and Commissioning of Distribution Network

Seti Nadi (25 MW) 132kV Transmission Line

Client: Vision Lumbini Urja Company Limited
Project type: Design, Supply, Construction, Installation, Testing and Commissioning of 132 kV Double Circuit Transmission Line

Construction of 11KV HT Line at Surkhet Area

Client: Water Supply, Irrigation and Energy Development Office, Surkhet
Project type: Distribution Line Construction of 11 KV HT Line total 28 km

Fast Tract 11kV Transmission Line

Client: China State Construction and Engineering Corp
Project type: Supply, Installation, Testing and Commissioning of 3 circuit 11kV Transmission Line of 4.5 km

25 MW Solar Substation Installation

Client: Nepal Electricity Authority
Project type: Installation and Commissioning of 33/66 kv Substation

11kV Distribution Network at Sudurpaschim Province (Package 03)

Client: NEA, Distribution and Consumer Service Directorate
Project type: Design, Installation/Erection, Testing and Commissioning of Distribution Network

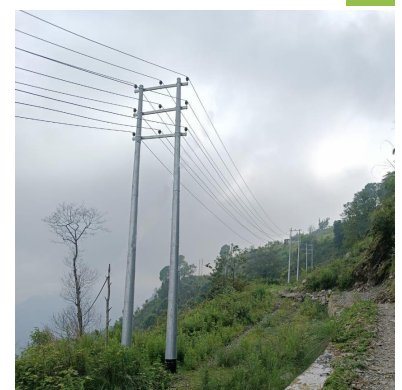
A Spotlight on Our **Civil Construction**

Ekantakuna Commercial Building

Project type: Construction of Commercial Building - EPC Contract

Construction of Prefab Building

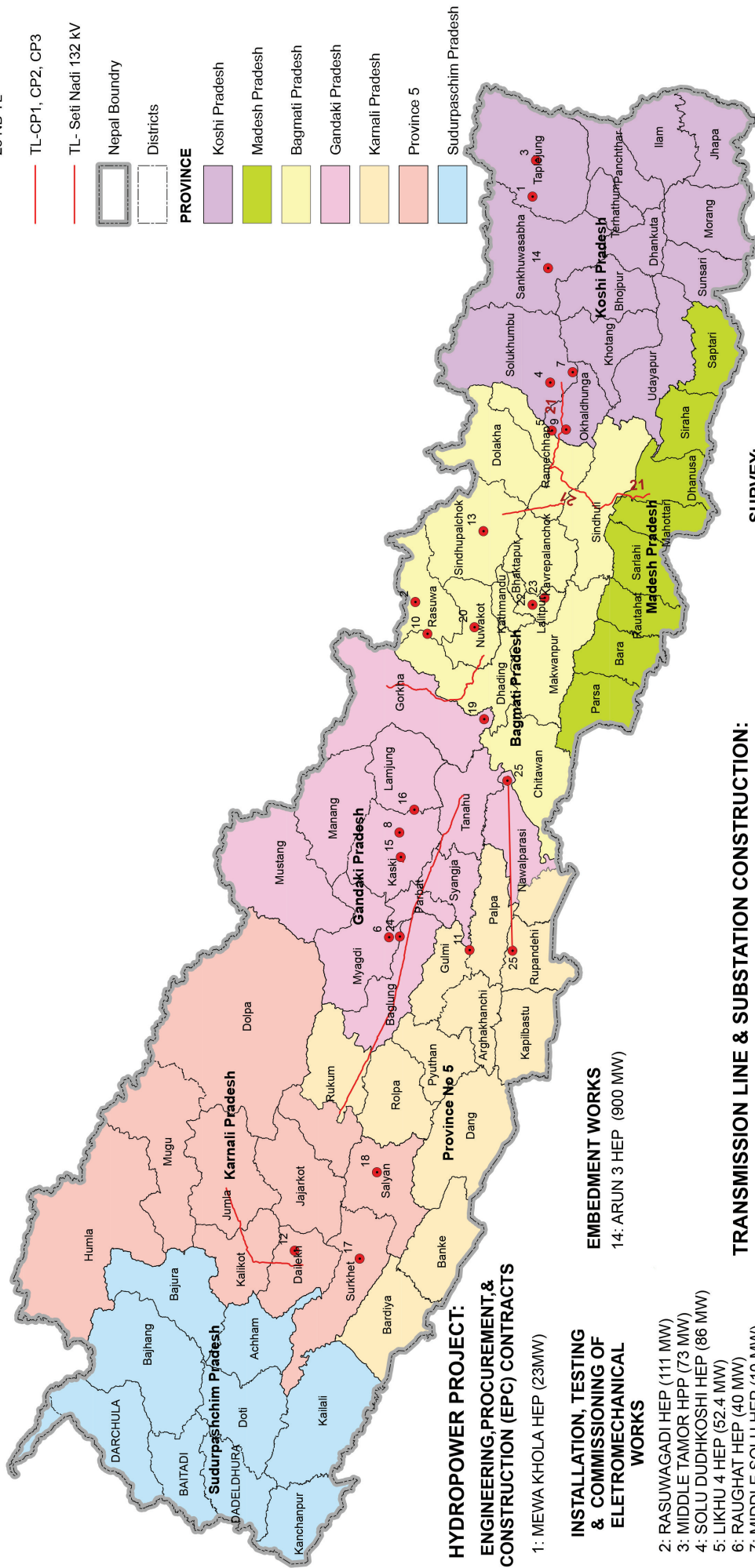
Client: Nepal Police
Project type: Construction of Prefab buildings



Projects of Jade Infra

Legend

- JI-P
- 25 NB TL
- TL-CP1, CP2, CP3
- TL- Seti Nadi 132 kV
- Nepal Boundary
- Districts
- PROVINCE**
- Koshi Pradesh
- Madesh Pradesh
- Bagmati Pradesh
- Gandaki Pradesh
- Karnali Pradesh
- Province 5
- Sudurpaschim Pradesh



HYDROPOWER PROJECT: ENGINEERING, PROCUREMENT & CONSTRUCTION (EPC) CONTRACTS

- 1: MEWA KHOLA HEP (23MW)
- 2: RASUWAGADI HEP (111 MW)
- 3: MIDDLE TAMOR HPP (73 MW)
- 4: SOLU DUDHKOSHI HEP (86 MW)
- 5: LIKHU 4 HEP (52.4 MW)
- 6: RAUGHAT HEP (40 MW)
- 7: MIDDLE SOLU HEP (10 MW)

EMBEDMENT WORKS

- 14: ARUN 3 HEP (900 MW)

TRANSMISSION LINE & SUBSTATION CONSTRUCTION:

- 15: SETI NADI (25 MW) 132 KV DOUBLE CIRCUIT TRANSMISSION LINE
- 16: MIDIM-1 132KV SINGLE CIRCUIT TRANSMISSION LINE
- 17: CONSTRUCTION OF 11KV HT LINE AT SURKHET
- 18: CONSTRUCTION OF 11KV HT LINE AT SALYAN
- 19: FAST TRACT 11KV TRANSMISSION LINE
- 20: NUWAKOT SOLAR STATION (25 MW) INSTALLATION AND COMMISSIONING OF 33/66 KV SUBSTATION
25. NARAYANGHAT-BUTWAL 11KV TRANSMISSION LINE

SUPERVISION OF ELECTROMECHANICAL WORKS

- 8: SUPPER MADI HEP (44 MW)
- 9: LOWER LIKHU HEP (28.1 MW)
10. MAILUNG KHOLA HEP (14 MW)
11. PANYU KHOLA HEP (3.5MW)

OPERATION AND MAINTENANCE

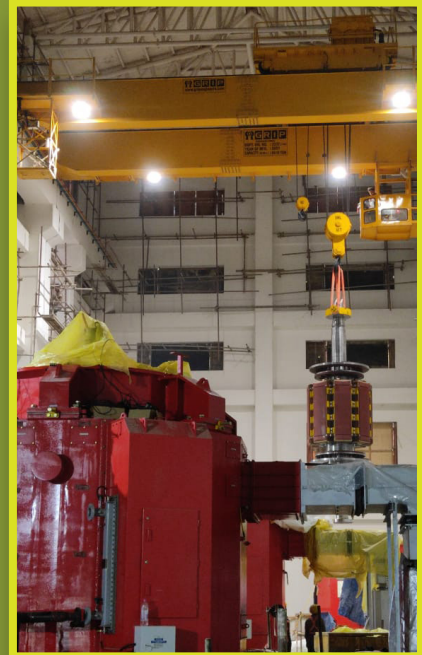
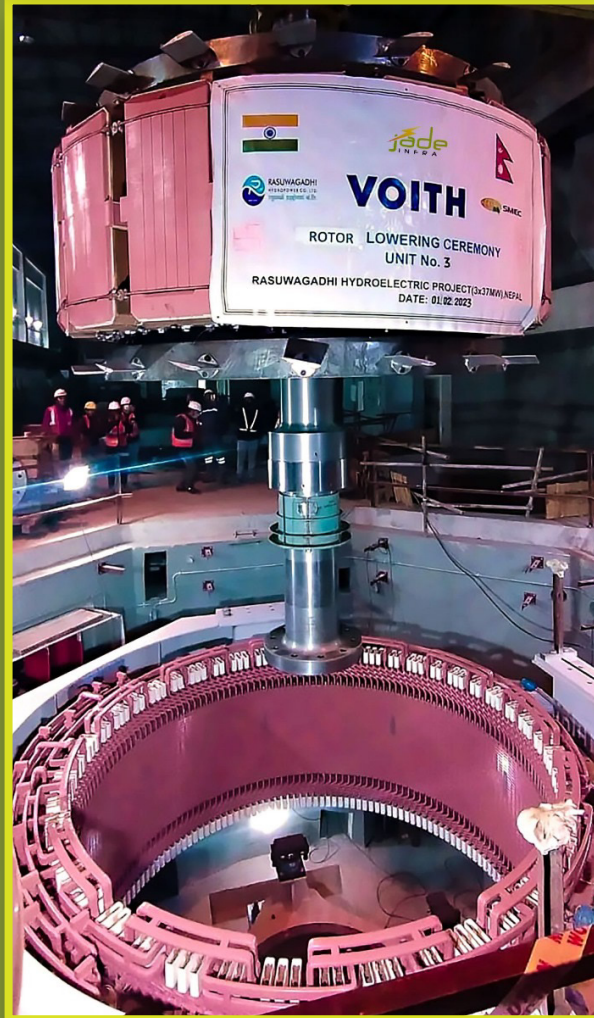
12. LOHORE KHOLA HEP (4.5MW)
- 13: BALEPHI HEP (36 MW)

SURVEY:

- 21: 400 KV , 132 KV SURVEY, ERT & GEO-TECNICAL INVESTIGATION OF CP-1, CP-2 & CP-3 TRANSMISSION LINES (400 KV & 132 KV)

CONSTRUCTION:

- 22: EKANTAKUNA COMMERCIAL BUILDING, KATHMANDU
23. CONSTRUCTION OF PREFAB BUILDING- NEPAL POLICE ACADEMY
24. RAHUGHAT CLOSED STORE



Jade Infra Pvt. Ltd

Tel : 977-1-5522158
info@jadeinfra.com.np
www.jadeinfra.com.np
Kabil Marg, Thapathali
Kathmandu, Nepal

